

**OUTLINE FOR SWINE EXHIBITORS**  
**WEIGH-IN: SATURDAY JULY 25, 2020**  
**(LAST UPDATED: JULY 8, 2020)**

**I. Arrival Procedures**

- a. Vet Check
  - i. All animals must arrive on grounds between 6:00am and 9:00am.
  - ii. All swine will be vet inspected at the livestock gate near Wolin Arena (Empire Street).
  - iii. Animals must obtain a signed vet check card at the gate and present it when arriving at the scales.
  - iv. If an animal does not pass vet check, it must remain in vehicle and be removed from fairgrounds immediately.
- b. Weigh-In Process
  - i. Everybody must remain in their vehicles while waiting to go across the scales. **NO** socializing or loitering will be allowed while waiting in line for vet check and/or scales.
  - ii. After completing vet check, vehicles will be directed through the camping area and down the alleyway between the beef and swine barns (**See map on page 2**).
  - iii. There will be two weigh-in stations running simultaneously in order to properly distance and limit exposure.
  - iv. Only exhibitors will be allowed to exit the vehicle for unloading. If an exhibitor is unable to complete this by themselves, one parent may exit and assist. Drivers must remain in the vehicle.
  - v. Staff will be present and assist in the unloading and weighing of animals.
  - vi. The judge will be onsite during the unloading process and will inspect all animals for market readiness prior to the show.
    - 1. Animals meeting the specified weight requirements and deemed market ready will be directed to a holding pen.
    - 2. Animals not meeting the weight requirements and/or deemed "unmarketable" will be scratched from the virtual show and sale immediately.
  - vii. Holding pens will be assigned by staff as animals arrive, not by club. There will be no sharing of pens outside household members and no decorating of pens or stalls.
  - viii. Fair staff and approved volunteers will take over care of the hogs until they are loaded for transportation to the harvesting facility.

**II. Paperwork Requirements**

- a. All swine must have a completed medication form prior to their arrival on the fairgrounds. Please have form filled out, signed, and ready to submit when arriving at the scale.
- b. Independent exhibitors must turn in all of their independent paperwork at the scale. Failure to submit paperwork will result in entries being disqualified.
- c. Exhibitors will be required to turn in the signed vet check card prior to animals being weighed. No animals will be accepted without the signed vet check card.

This plan is subject to change. Any changes made will be published to the Amador County Fair website: [Amadorcountyfair.com](http://Amadorcountyfair.com)

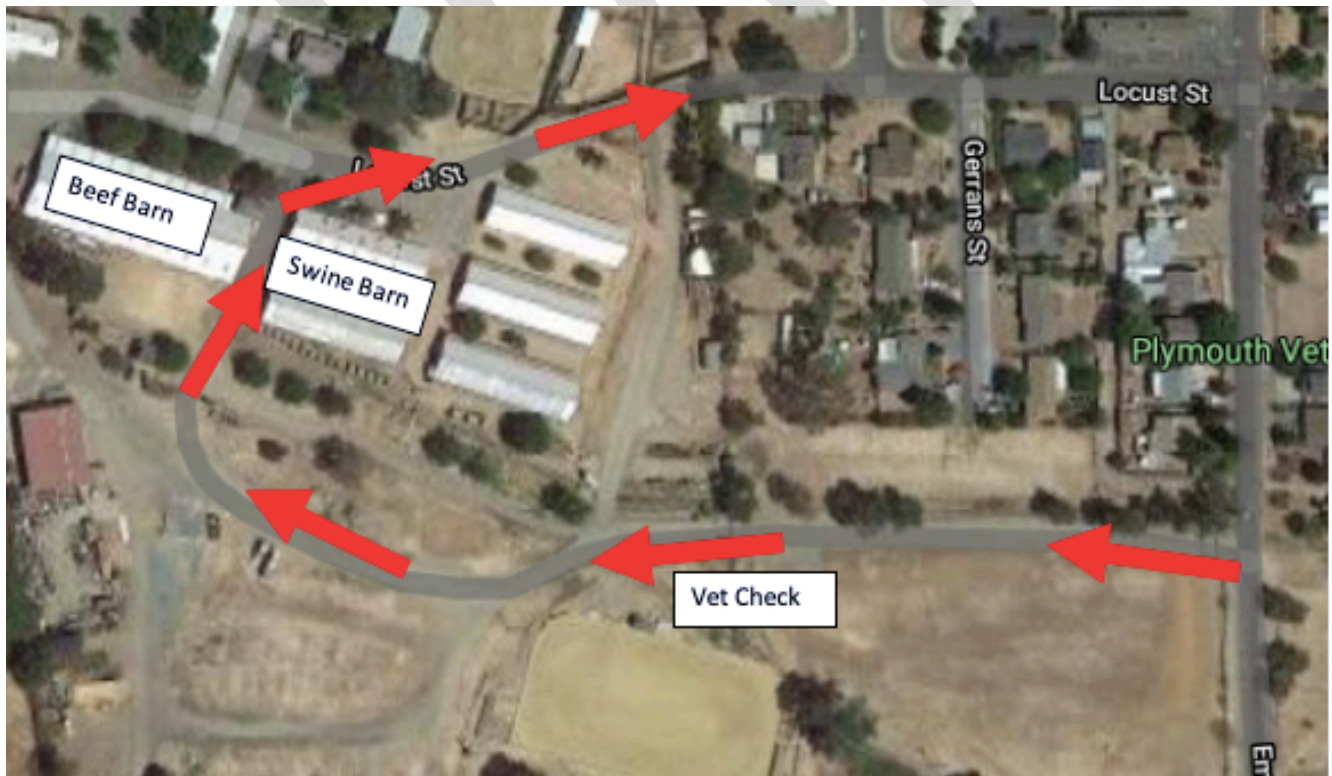
**OUTLINE FOR SWINE EXHIBITORS**  
**WEIGH-IN: SATURDAY JULY 25, 2020**  
**(LAST UPDATED: JULY 8, 2020)**

**III. Safety Measures**

- a. Per Governor Newsom's updated mandate on facial coverings for state facilities, all personnel, volunteers and guests will be required to wear a mask, or other face covering, that covers their nose and mouth while on grounds and interacting with others.
- b. Hand sanitizer and/or disinfectant will be on site and readily available. Equipment and gates will be sanitized as needed.
- c. All personnel, volunteers, and guests will maintain physical distancing and proper hygiene.
- d. Before entering the fairgrounds, every person will go through the approved COVID-19 screening process and turn in the required waivers and questionnaires.

**IV. Important Reminders!**

- a. Swine hair length must be no shorter than 5/8".
- b. The minimum weight for swine is 215lbs and maximum weight is 285lbs.
- c. ALL Swine exhibitors must bring one (1) bag of shavings per pen with them on the day of the evaluation.
- d. You must declare which animals you are selling and/or showing, if any, by July 19<sup>th</sup>. Each exhibitor may sell up to two (2) lots, excluding heifers
- e. Please monitor the fair website, [amadorcountyfair.com](http://amadorcountyfair.com), for any changes to this document and/or the schedule.



This plan is subject to change. Any changes made will be published to the Amador County Fair website: [Amadorcountyfair.com](http://Amadorcountyfair.com)