

PHOTOGRAPHY

SELL YOUR ARTWORK!

It is up to the artist to specify on the entry form the desired price. Artists' are responsible for the Fair's commission of 15% and tax. So, consider that in your pricing. Please title your work. Artwork is expected to remain on display throughout the Fair. Sold Artwork will be released on Monday, August 2nd

ALL PHOTOS MUST HAVE A TITLE
ON THE ENTRY FORM

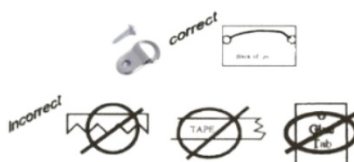
****LIMITED TO 5 TOTAL ENTRIES PER EXHIBITOR****

FORMS & FEES DUE BY: Friday, July 2nd 6 pm
Entries Received Saturday, July 24th 10 am – 4 pm in POKERVILLE HALL
Open Judging
Entries Judged: Sunday, July 25th 9 am
Entries Released: Monday, August 2nd 10 am – 4 pm

Open to Amador, El Dorado, Calaveras, Tuolumne Counties and current Amador County Art Association members except Division 264 & 265, which is open to residents of California and Nevada.

FRAMING WITH CLEAR GLASS (**NO PLEXI-GLASS OR PLASTIC**) OF ALL PICTURES, EXCEPT PHOTOS ON ALTERNATIVE SURFACES, (WHICH MUST BE SUBMITTED IN HEAVY DUTY CLEAR BAGS) IS NOW REQUIRED TO FACILITATE CAREFUL HANDLING OF ENTRIES & PROPER HANGING FOR THE SHOW!
PHOTOS ARE EASILY SCRATCHED!

- A. Entries must be entered into the appropriate class to receive judging.
TRADITIONAL PRINT – Any photo taken with film or digital reader card, where the image has not undergone manipulation other than cropping, burning and dodging, normal color or density balancing and spotting. Machine copy of original image is acceptable. 2 or more prints combined or stitched together are not allowed.
MANIPULATED PRINT – Any changes to the image beyond the traditional changes and the image is affixed to paper. This includes hand coloring, cross processing, photo collage, photo grams, cyanotype, Polaroid transfers, etc.
- B. Photos on alternative surfaces (wood, canvas, metal) must be self-contained, dry and submitted in heavy-duty clear bags. Framing with glass is optional.
The Fair management will not be responsible for damages or fingerprints.
- C. Photos in all Divisions must have a minimum image size of 35 square inches (i.e., 5 X 7). Photos in all Divisions (except Div. 263), image, mat and frame may not exceed 20 x 24 inches.
- D. Division 263 (Professional) image, mat and frame may not exceed 32 x 32 inches.
- E. **ALL PHOTOS ENTERED IN THE SHOW MUST HAVE STANDARD D-RINGS AND WIRE FOR HANGING.** Metal, glued or adhesive hangers will NOT be accepted.



- F. All photos must have been taken by the artist exhibitor, but need not have been developed or printed by the exhibitor except in Division 261 (Developing & Processing).
- G. All work must be originally created by the Artist/Exhibitor and to have been taken within two years of current fair.
- H. PRINT ARTIST'S NAME ON BACK OF PICTURE. NO ARTIST NAME TO BE EXPOSED ON FRONT OF PICTURE. (If name is on the front, please cover with tape).
- I. The Fair has the authority to deem a photo inappropriate to be shown at Fair.

PHOTOGRAPHY

BEST OF SHOW AWARDS

AMATEUR – \$40 Premium sponsored by Camille Waters Photography

ADV. AMATEUR – \$40 Premium sponsored by The Garbarini Family, LLC –Tom, Don, Jan & Suzy

PROFESSIONAL – \$40 Premium sponsored by Carolyn Fox

POPULAR VOTE AWARD

\$40 Premium sponsored by Dorothy Magoffin

RIBBONS AWARDED TO:

Professional-Advanced Amateur-Amateur

Color or Black & White

1ST Thru 3RD & Honorable Mention

AMATEUR

Those persons who engage in photography as a hobby. Anyone having won three (3) First Places in this category is no longer eligible to enter as an amateur and must enter as an Advanced Amateur. Amateur may show above present level, but may not return to former status. May show in one entry level per year.

DIVISION 260 - AMATEUR PHOTOGRAPHY

Black & White or Color Entry

Entry Fee: \$3.50 per entry

Ribbons – 1st thru 3rd

FORMS & FEES DUE BY: Friday, July 2nd 6 pm

Entries Received: Saturday, July 24th 10 am – 4 pm in POKERVILLE HALL

Open Judging

Entries Judged: Sunday, July 25th 9 am

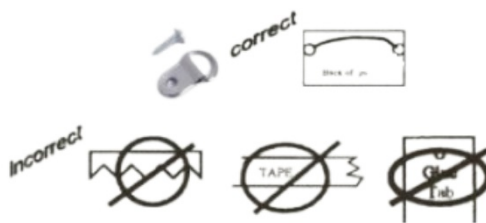
Entries Released: Monday, August 2nd 10 am – 4 pm

ALL PHOTOS MUST HAVE A TITLE ON THE ENTRY FORM

****LIMITED TO 5 TOTAL ENTRIES PER EXHIBITOR****

ALL PHOTOS ENTERED IN THE SHOW MUST HAVE STANDARD D-RINGS AND WIRE FOR

HANGING. Metal, glued or adhesive hangers will NOT be accepted.



Plein Air Painting & Fairtime Photo

For Rules, Please See Page 99

Division #139 & 140

Please remember to thank your sponsors

PHOTOGRAPHY

BEST OF DIVISION

\$40 Premium sponsored by Jim & Margo Carr

Premiums/Class Sponsored by

Amador County Fair, Amador County Arts Council & Kelly Moore Paint of Jackson

1st Place Winners - \$5

TRADITIONAL PRINTS – See Rules

Class

1. Scenic Views – Landscapes
2. Scenic Views – Waterscapes
3. Scenic Views – Cityscapes, Architecture/Building
4. Scenic Views – Other
5. Churches in Amador County
6. Children – Action
7. Children-Portrait, single, multiple
8. Children – Other
9. Portraits/People, other than children
10. Garden Flowers
11. Wildflowers

Class

12. Pets
13. Wildlife – Portraits & in the landscape
14. Wildlife – Action & behavior
15. Antique Tractors
16. Any subject – black & white
17. Any subject – color, nature
18. Any subject – color, other
19. Sunset/Sunrise
20. Macro/Super close-up – Any subject, any color
21. Cellphone/iPad Photos

MANIPULATED PRINTS – See Rules

Class

22. Scenic Views – Landscape/ Waterscape

Class

23. Other

DIVISION 261 - PROCESSING & DEVELOPING

AMATEUR, ADVANCED AMATEUR & PROFESSIONAL

Photos taken, developed, and printed by the exhibitor-Kodachrome developing excluded.

Black & White or Color

Entry Fee: \$6.50 per entry

Ribbons – 1st thru 3rd

FORMS & FEES DUE BY: Friday, July 2nd 6 pm

Entries Received: Saturday, July 24th 10 am – 4 pm in POKERVILLE HALL

Open Judging

Entries Judged: Sunday, July 25th 9 am

Entries Released: Monday, August 2nd 10 am – 4 pm

ALL PHOTOS MUST HAVE A TITLE ON THE ENTRY FORM

****LIMITED TO 5 TOTAL ENTRIES PER EXHIBITOR****

ALL **PHOTOS ENTERED IN THE SHOW MUST HAVE STANDARD D-RINGS AND WIRE FOR HANGING.** Metal, glued or adhesive hangers will NOT be accepted.



Traditional & Manipulated Prints

Class

1. Black/White

Class

2. Color
-

PHOTOGRAPHY

ADVANCED AMATEUR

Those who engage in Photography as a hobby, whose return from sales (if any) does not exceed the cost of materials for the articles sold and are not otherwise remunerated because of engaging in this work, except for cash prizes and awards.

DIVISION 262 - ADVANCED AMATEUR ONLY

Black & White or Color Entry

Entry Fee: \$6.50 per entry

Ribbons – 1st thru 3rd

FORMS & FEES DUE BY: Friday, July 2nd 6 pm

Entries Received: Saturday, July 24th 10 am – 4 pm in POKERVILLE HALL

Open Judging

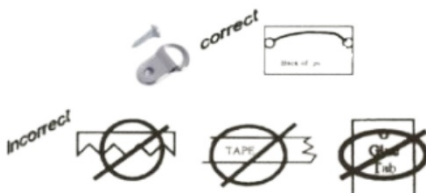
Entries Judged: Sunday, July 25th 9 am

Entries Released: Monday, August 2nd 10 am – 4 pm

ALL PHOTOS MUST HAVE A TITLE ON THE ENTRY FORM

****LIMITED TO 5 TOTAL ENTRIES PER EXHIBITOR****

ALL **PHOTOS ENTERED IN THE SHOW MUST HAVE STANDARD D-RINGS AND WIRE FOR HANGING.** Metal, glued or adhesive hangers will NOT be accepted.



BEST OF DIVISION

\$40 Premiums sponsored by David & Leslie Schupp

Premiums/Class Sponsored by

Amador County Fair, Amador County Arts Council & Kelly Moore Paint of Jackson

1 st	2 nd	3 rd
\$10	\$5	\$3

TRADITIONAL PRINTS – See Rules

Class

1. Scenic Views – Landscape
2. Scenic Views – Waterscape
3. Action
4. People
5. Churches in Amador County
6. Animals
7. Scenic Views - Cityscape, Architecture & Building

Class

8. Flowers
9. Portraits – “People”
10. Any subject not listed
11. Macro/Super close-up – Any subject, any color
12. Cell phone/iPad photos

MANIPULATED PRINTS – See Rules

Class

13. Scenic Views – Land or Water

Class

14. Other

PHOTOGRAPHY

PROFESSIONAL

Photographers who are represented by a gallery, who TEACH OR SELL regularly as part of their livelihood or have "ONE MAN SHOWS." Exhibitors in this division are not permitted to enter Amateur or Advanced Amateur divisions.

DIVISION 263 - PROFESSIONAL ONLY

Black & White or Color Entry

Entry Fee: \$6.50 per entry

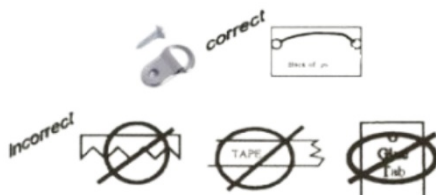
Ribbons – 1st thru 3rd

FORMS & FEES DUE BY: Friday, July 2nd 6 pm
Entries Received: Saturday, July 24th 10 am – 4 pm in POKERVILLE HALL
Open Judging
Entries Judged: Sunday, July 25th 9 am
Entries Released: Monday, August 2nd 10 am – 4 pm

ALL PHOTOS MUST HAVE A TITLE ON THE ENTRY FORM

****LIMITED TO 5 TOTAL ENTRIES PER EXHIBITOR****

ALL **PHOTOS ENTERED IN THE SHOW MUST HAVE STANDARD D-RINGS AND WIRE FOR HANGING.** Metal, glued or adhesive hangers will NOT be accepted.



\$50 Gift Certificate sponsored by Add Art of Jackson

Premiums/Class Sponsored by

Amador County Fair, Amador County Arts Council & Kelly Moore Paint of Jackson

1st	2nd	3rd
\$15	\$10	\$5

TRADITIONAL PRINTS – See Rules

Class

1. Scenic Views – Landscape
2. Scenic Views – Waterscape
3. Action
4. People “Documentary”
5. Churches in Amador County
6. Animals
7. Scenic Views - Cityscape, Architecture & Building

Class

8. Drone photos
9. Portraits – “People”
10. Other
11. Macro/Super close-up – Any subject, any color
12. Weddings in Amador County
13. Vineyards/Wineries in Amador County

MANIPULATED PRINTS – See Rules

Class

14. Scenic Views – Land or Water

Class

15. People/Portraits

Plein Air Painting & Fairtime Photo
For Rules, Please See Page 99
Division #139 & 140

PHOTOGRAPHY

DIVISION 264 - FAIR THEME

"Back in the Saddle Again"

Black & White or Color

Image & mat not to exceed 16" X 20" plus frame

FORMS & FEES DUE BY: Friday, July 2nd 6 pm

Entries Received: Saturday, July 24th 10 am – 4 pm in POKERVILLE HALL

Open Judging

Entries Judged: Sunday, July 25th 9 am

Entries Released: Monday, August 2nd 10 am – 4 pm

ALL PHOTOS MUST HAVE A TITLE ON THE ENTRY FORM

****LIMITED TO 5 TOTAL ENTRIES PER EXHIBITOR****

Entry Fee: \$6.50 per entry

Ribbons – 1st thru 3rd

ALL PHOTOS ENTERED IN THE SHOW MUST HAVE STANDARD D-RINGS AND WIRE FOR HANGING. Metal, glued or adhesive hangers will NOT be accepted.



BEST OF DIVISION

\$40 Premium sponsored by Carolyn Fox

\$50 Gift Certificate sponsored by Add Art of Jackson

TRADITIONAL PRINTS – See Rules

Class

1. Amateur only - traditional or manipulated

Class

2. Advanced Amateurs & Professional - traditional or manipulated

Plein Air Painting & Fairtime Photo

For Rules, Please See Page 99

Division #139 & 140

PHOTOGRAPHY

DIVISION 265 - SCENES OF AMADOR COUNTY

Open to Professionals, Advanced Amateurs and Amateur photographers, residents of California or Nevada.

Amador County Scenery must have the location identified on the back of the picture & on the entry form.

Scenes not in Amador County will not be judged for awards. Image and mat not to exceed 16" x 20" inches, plus frame. Black & White or Color

BEST OF DIVISION

\$40 Premium sponsored by Carolyn Fox

Entry Fee: \$6.50 per entry

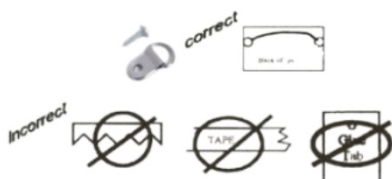
Ribbons – 1st thru 3rd

FORMS & FEES DUE BY: Friday, July 2nd 6 pm
Entries Received: Saturday, July 24th 10 am – 4 pm in POKERVILLE HALL
Open Judging
Entries Judged: Sunday, July 25th 9 am
Entries Released: Monday, August 2nd 10 am – 4 pm

ALL PHOTOS MUST HAVE A TITLE ON THE ENTRY FORM

****LIMITED TO 5 TOTAL ENTRIES PER EXHIBITOR****

ALL PHOTOS ENTERED IN THE SHOW MUST HAVE STANDARD D-RINGS AND WIRE FOR HANGING. Metal, glued or adhesive hangers will NOT be accepted.



TRADITIONAL PRINTS – See Rules

Class

1. Amateur only

Class

2. Advanced Amateurs & Professional

MANIPULATED PRINTS – See Rules

Class

3. Amateur only

Class

4. Advanced Amateurs & Professional

Plein Air Painting & Fairtime Photo

For Rules, Please See Page 99

Division #139 & 140

PHOTOGRAPHY

DIVISION 266 – CREATIVE PHOTOGRAPHY “ANY SUBJECT”

Entry Fee: \$6.50 per entry

Ribbons – 1st thru 3rd

FORMS & FEES DUE BY: Friday, July 2nd 6 pm

Entries Received: Saturday, July 24th 10 am – 4 pm in POKERVILLE HALL

Open Judging

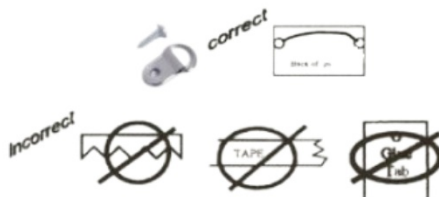
Entries Judged: Sunday, July 25th 9 am

Entries Released: Monday, August 2nd 10 am – 4 pm

ALL PHOTOS MUST HAVE A TITLE ON THE ENTRY FORM

****LIMITED TO 5 TOTAL ENTRIES PER EXHIBITOR****

ALL PHOTOS ENTERED IN THE SHOW MUST HAVE STANDARD D-RINGS AND WIRE FOR HANGING. Metal, glued or adhesive hangers will NOT be accepted.



Amateur

Class

1. Photo shopped – combine 2 or more “individual” prints stitched together or cut and pasted in any way
2. HDR – High Dynamic Resolution
3. Multiple - individually matted prints within one frame
4. Collages – Multiple, different photos assembled creating one single print

Advanced Amateur

Class

5. Photoshopped – combine 2 or more “individual” prints stitched together or cut and pasted in any way
6. HDR – High Dynamic Resolution
7. Multiple - Individually matted prints within one frame
8. Collages – Multiple, different photos assembled creating one single print

Professional

Class

9. Photoshopped – combine 2 or more “individual” prints stitched together or cut and pasted in any way
10. HDR – High Dynamic Resolution
11. Multiple - Individually matted prints within one frame
12. Collages – Multiple, different photos assembled creating one single pr

Plein Air Painting & Fairtime Photo

For Rules, Please See Page 99

Division #139 & 140